

Intro Only: **SANTA CLAUS IS COMING TO TOWN**
(BOOK I VERSION)

The tablature consists of six lines of guitar notation, each with a four-measure structure. The notes are written above the staff lines, and the fret numbers are circled. The notes are: A (5), B (5), E (6), A (5), B (5), E (6), A (5), D (5), A (5), D (5), A (5), F# (6), B (5), E (6), A (5), B (5), E (6), E (5), A (6), D (5), E (5), A (6), D (5), F# (5), B (6), E (5), B (6). The final measure of the sixth line contains the sequence 77 542. A circled cross symbol is located at the end of the sixth line.

Up to date school info. posted on Facebook:

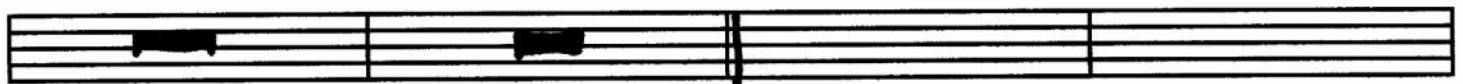


GUITAR SCHOOL OF RICHLAND

**SANTA CLAUS IS COMING TO TOWN
(BOOK II VERSION)**



♩ ♩ ♩ ♩



A D A D

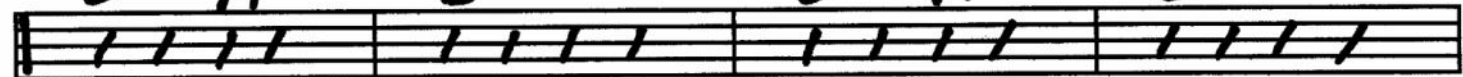


A F#m Bm E A Bm E

3x's to finish

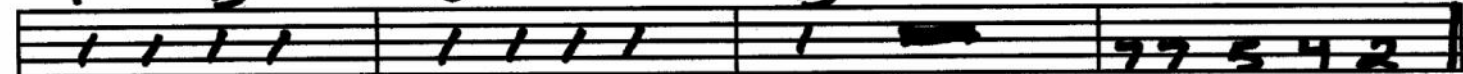


E^m A D E^m A D



F#^m B E B

To

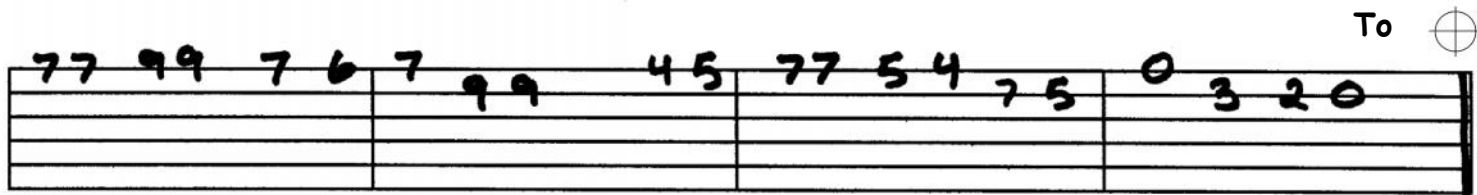
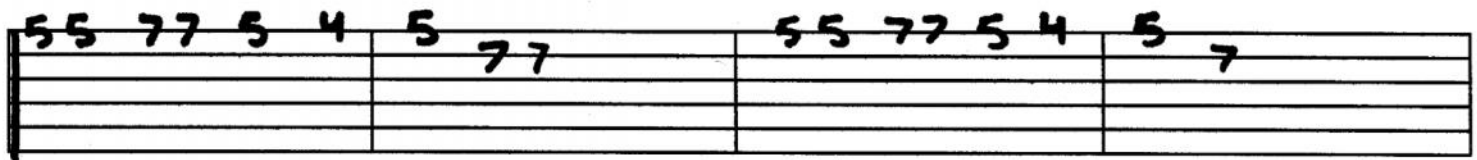
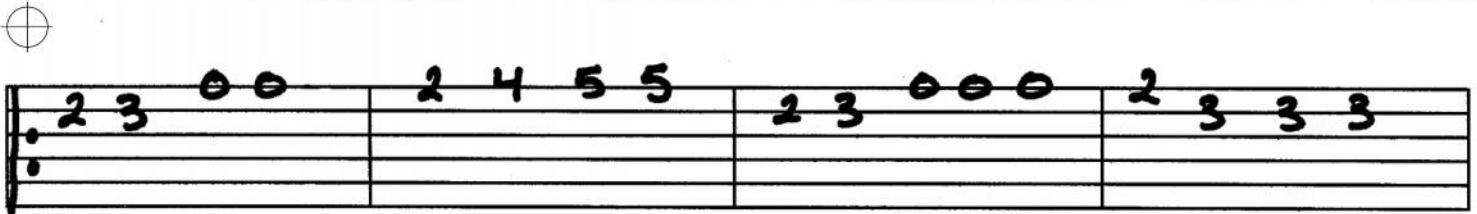
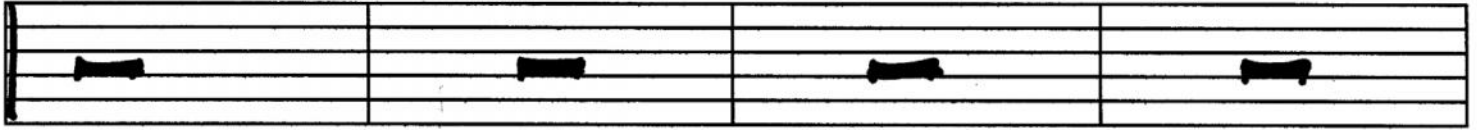


Up to date school info. posted on Facebook:



GUITAR SCHOOL OF RICHLAND

SANTA CLAUS IS COMING TO TOWN (MELODY)



Up to date school info. posted on Facebook:



GUITAR SCHOOL OF RICHLAND